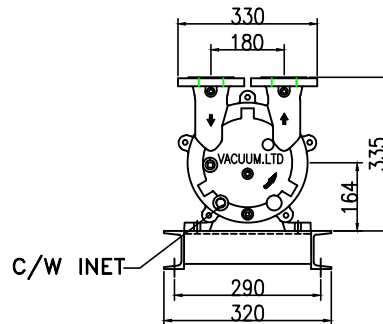
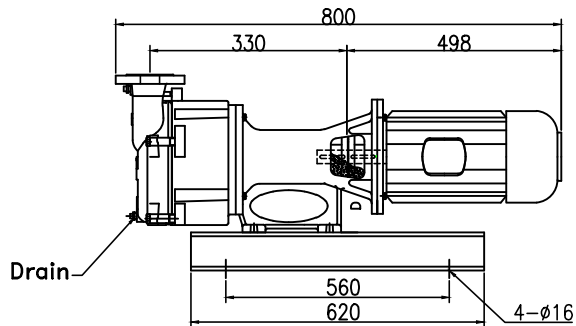
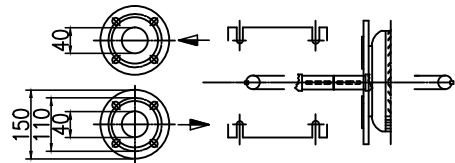


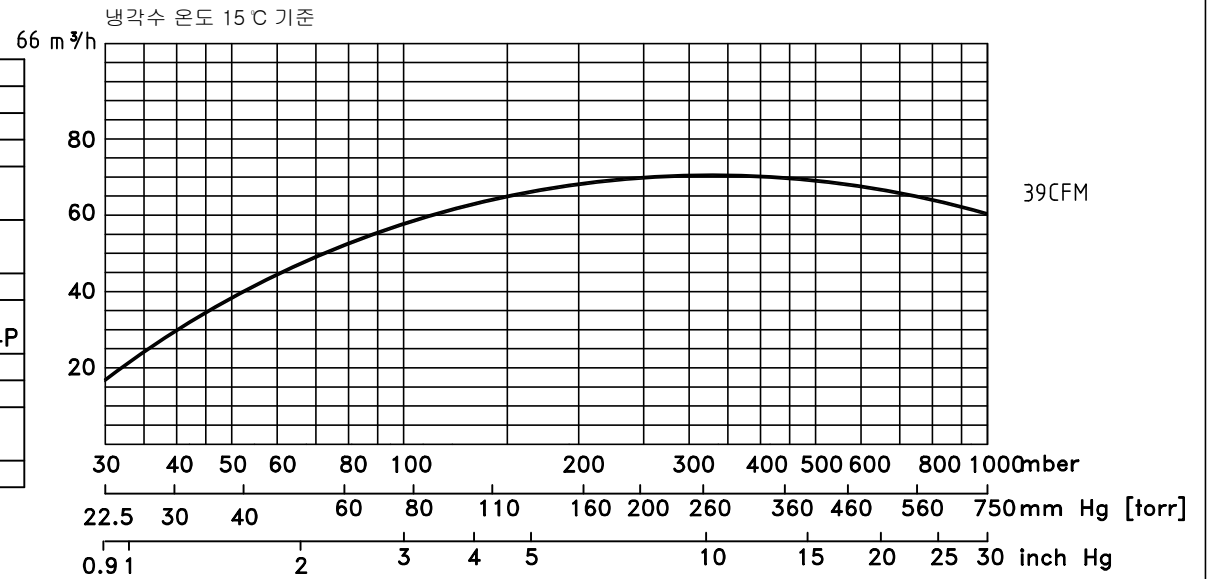
SPECIFICATIONS

Design	880 Lit./min(50Hz)
Displacement	1100 Lit./min(60Hz)
Speed	1400 r.p.m. (50Hz)
	1750 r.p.m. (60Hz)
Normal usage vacuum pressure	Under Torr
Attainable vacuum pressure	Max 22.5Torr
Suction port diameter	DIN 40A (2) (Option:B.S.P.T)
Motor	Vertical Motor Standard 3-Phase 220/380V 60Hz 2.2kW 4P
Water Capacity	15°C 기준 7L/MN
Weight	100 Kg
Painting	Color- VL951 (Company's standard)
Allowable ambient temp	-10°- 40C

-1 Excluding motor and some other parts.
-IEC FANGE MOTOR 부착기준



Curve referred to dry air at 20°C (68 °f) 배기량 SUCTION CAPACITY



ACCESSORIES(Option)

- Vacuum Manual Valve
- Vacuum gauge
- Vacuum Check Valve
- Separator Tank

CONSUMABLE LIST (Vacuum.ENG GENUINE PARTS)

Designation	Specification	Quantity/set
M/C Seal	φ45	1
Bearing	6307,6206 ZZ (Special Heat - resisting grease)	각 1
Half Coupling	φ85	1
Shaft key	φ28 8x4	1

DWG DATE	SCALE	N/S	APPROVE	TITLE	WATER RING V/P
2020.00.00				CLIENT	
DWGBY	DESNBY	CHDBY	APPROVE	LOCATION	
진공엔지니어링				DWG NO	JDRP-3S

- 품질 개선을 위해서 예고없이 변경 될수 있음.
- Not binding dimension that can change according to motor make